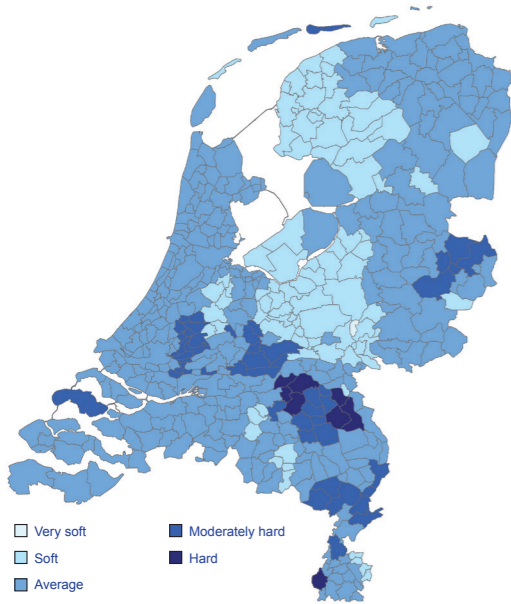
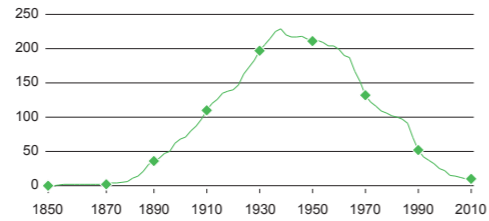


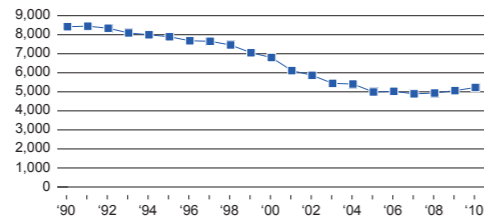
## Hardness of drinking water



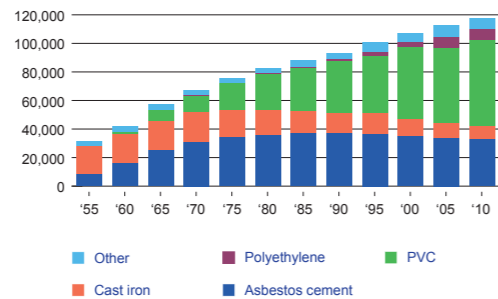
## Development of the number of companies



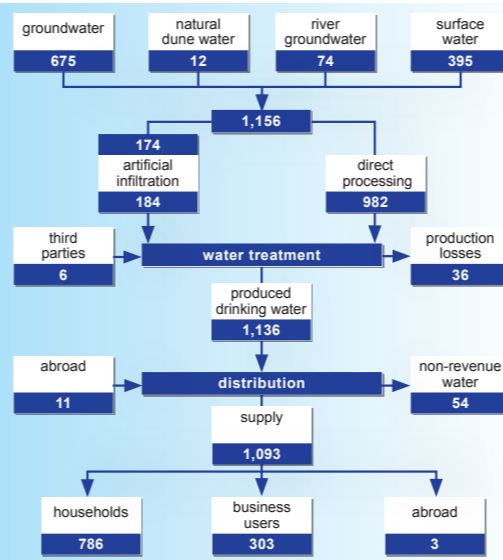
## Development of the number of employees (FTE)



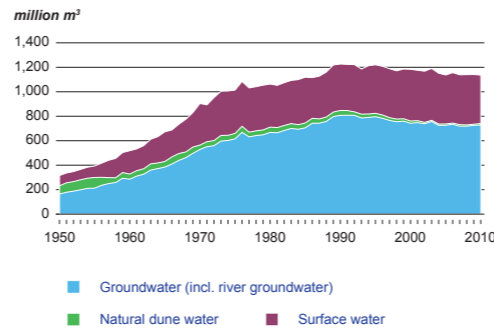
## Development of the drinking water network (km)



## Drinking water balance 2010 (million m³)



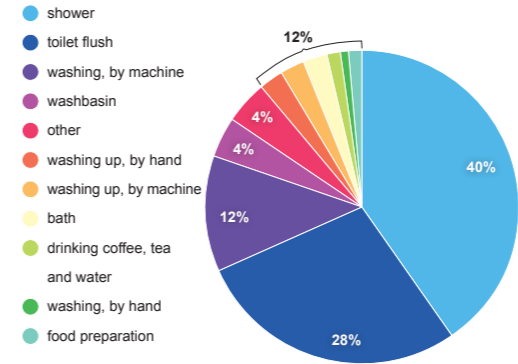
## Drinking water production by source 1950 - 2010



## Breakdown of domestic water consumption 1995 - 2010

	1995	2001	2004	2007	2010
	<i>litre/person, day</i>				
bath	9.0	3.7	2.8	2.5	2.8
shower	38.3	42.0	43.7	49.8	48.6
washbasin	4.2	5.2	5.1	5.3	5.0
toilet flush	42.0	39.3	35.8	37.1	33.7
washing, by hand	2.1	1.8	1.5	1.7	1.1
washing, by machine	25.5	22.8	18.0	15.5	14.3
washing up, by hand	4.9	3.6	3.9	3.8	3.1
washing up, by machine	0.9	2.4	3.0	3.0	3.0
food preparation	2.0	1.6	1.8	1.7	1.4
drinking coffee, tea and water	1.5	1.5	1.6	1.8	1.8
other	6.7	6.7	6.4	5.3	5.3
<b>total</b>	<b>137.1</b>	<b>130.7</b>	<b>123.8</b>	<b>127.5</b>	<b>120.1</b>

## Breakdown water consumption 2010



## Financial balance sheet on 31-12-2010 (million €)

Assets	Liabilities	
tangible fixed assets	share capital	36
intangible fixed assets	reserves	1,751
financial fixed assets	contributions third parties	177
stocks	provisions	204
account receivables/debtors	long-term loan capital	3,091
liquid assets/cash	short-term loan capital	936
<b>total</b>	<b>total</b>	<b>6,194</b>



## Water supply areas



## General indicators per supply area 2010

Company	Inhabitants (x 1,000)	surface (km <sup>2</sup> )	employees (FTE)	network length (km)
Waterbedrijf Groningen	592	2,403	217	5,028
Waterleidingmaatschappij Drenthe	437	2,486	158	4,915
Vitens	5,553	18,042	1,375	46,926
PWN Waterleidingbedrijf Noord-Holland	1,666	3,628	531	9,955
Waternet	922	287	519 <sup>1)</sup>	2,774
Dunea	1,227	601	521	4,596
Oasen	753	1,115	241	3,674
Evides Drinkwater	2,040	4,736	516	12,965
Brabant Water	2,425	5,026	729	18,081
WML	1,120	2,209	421	8,671
<b>The Netherlands</b>	<b>16,735</b>	<b>40,533</b>	<b>5,228</b>	<b>117,585</b>

<sup>1)</sup> FTEs working for water supply only.

## Drinking water per supply area 2010

Company	connections (x 1,000)	production (million m <sup>3</sup> )	sales (million m <sup>3</sup> )	turnover (million €)
Waterbedrijf Groningen	277	44	42	48
Waterleidingmaatschappij Drenthe	200	32	29	34
Vitens	2,392	345	330	417
PWN Waterleidingbedrijf Noord-Holland	766	88	100	157
Waternet	491	86	65	95
Dunea	605	76	70	121
Oasen	334	41	46	74
Evides Drinkwater	1,007	176	171	201
Brabant Water	1,093	178	167	191
WML	535	71	72	103
<b>The Netherlands</b>	<b>7,701</b>	<b>1,136</b>	<b>1,090</b>	<b>1,442</b>

## Residential drinking water rate per company 2010 - 2011 <sup>1)</sup>

Company	2010		2011		total 2011 vs. 2010
	total per m <sup>3</sup> <sup>2)</sup>	standing charge	volumetric rate	total per m <sup>3</sup> <sup>2)</sup>	
Waterbedrijf Groningen	1.23	34.80	0.90	1.26	2.0%
Waterleidingmaatschappij Drenthe	1.30	52.00	0.75	1.28	-1.3%
Vitens	1.31	25.00	1.06	1.31	0.0%
PWN Waterleidingbedrijf Noord-Holland	1.67	47.83	1.24	1.73	3.2%
Waternet	1.69	42.15	1.26	1.69	0.0%
Dunea <sup>3)</sup>	1.68	58.08	1.09	1.69	0.4%
Oasen <sup>3)</sup>	1.78	76.18	1.03	1.81	1.8%
Evides Drinkwater <sup>3)</sup>	1.57	59.76	0.95	1.57	0.0%
Brabant Water	1.38	66.96	0.67	1.36	-1.4%
WML	1.57	67.20	1.02	1.71	8.5%
<b>The Netherlands</b>	<b>1.49 <sup>4)</sup></b>	<b>48.64</b>	<b>1.00</b>	<b>1.50</b>	<b>1.0%</b>

<sup>1)</sup> Metered houses. Excluding tap water tax and VAT.

<sup>2)</sup> For an average family (2.22 persons, 43.8 m<sup>3</sup> per person).

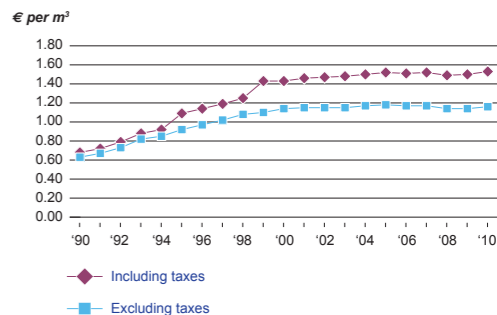
<sup>3)</sup> Rate in municipalities not levying distribution reimbursements.

<sup>4)</sup> Weighted average according to inhabitants per area

## River basin districts, Natura 2000 areas and groundwater protection areas



## Development of average price <sup>1)</sup>



<sup>1)</sup> Over-all price (households and business users together).



## Sector fundamentals

	1990	2000	2009	2010
number of companies	52	24	10	10
employees (FTE)	8,422	6,803	5,063	5,228
investments (million €)	263	419	390	458
taxes on water (million €)	.	350	396	404
production (million m <sup>3</sup> )	1,227	1,183	1,141	1,136
network length (x 1,000 km)	93	107	117	118
connections (x 1,000)	5,674	7,042	7,659	7,701
% metered	91	96	96	96
non-revenue water (million m <sup>3</sup> )	70	54	54	54

## Sector development of water sales and price

	1990	2000	2009	2010
sales (million m <sup>3</sup> )	1,167	1,127	1,093	1,090
turnover (million €)	743	1,418	1,420	1,442
average price (€/m <sup>3</sup> )	0.68	1.43	1.50	1.53
costs water company	0.63	1.14	1.14	1.16
groundwater taxes and distribution reimbursements	0.01	0.12	0.16	0.16
tap water tax and VAT	0.04	0.17	0.20	0.21
inflation-adjusted price, 2010=100 (€/m <sup>3</sup> )	1.05	1.75	1.52	1.53

## Development and spread of residential drinking water rate

