

# Drinking water fact sheet 2016



## Water supply areas



## Introduction

This leaflet gives an overview of core data on the drinking water sector and drinking water companies. Additionally, time series give insight into trends in the sector. The data are from the Vewin benchmark database, Vewin's annual 'Overview of water charges' and the study 'Household drinking water consumption' which is conducted every three years for Vewin by TNS NIPO. The maps on hardness of drinking water and WFD areas were compiled by KWR Watercycle Research Institute.

## General indicators per supply area <sup>1)</sup>

	Inhabitants x 1,000	Surface km <sup>2</sup>	Employees <sup>2)</sup> FTE	Network km
■ Brabant Water	2,467	5,026	698	18,150
■ Dunea	1,278	601	504	4,808
■ Evides	2,089	3,226	537	13,167
■ Oasen	759	1,115	253	4,142
■ PWN	1,701	3,628	505	9,916
■ Vitens	5,639	15,208	1,202	47,196
■ Waternet	996	350	385 <sup>3)</sup>	3,120
■ WBG	597	2,403	209	5,087
■ WMD	434	2,486	145	4,990
■ WML	1,116	2,209	398	8,762
<b>The Netherlands</b>	<b>17,076</b>	<b>36,252</b>	<b>4,834</b>	<b>119,339</b>

<sup>1)</sup> By December 31, 2015

<sup>2)</sup> Full-time equivalents own pay-roll

<sup>3)</sup> FTEs working for water supply only

## Sector fundamentals

	2000	2010	2014	2015
Number of companies	24	10	10	10
Employees (FTE)	6,803	5,228	4,939	4,834
Investments (million €)	419	458	472	468
Taxes on drinking water (million €)	334	399	402	414
Production (million m <sup>3</sup> )	1,183	1,136	1,124	1,136
Network length (x 1,000 km)	107	118	119	119
Connections (x 1,000)	7,042	7,701	8,011	7,964
Non-revenue water (million m <sup>3</sup> )	54	54	65	65

## Drinking water per supply area

	Connections <sup>1)</sup> x 1,000	Production million m <sup>3</sup>	Sales <sup>2)</sup> million m <sup>3</sup>	Turnover <sup>2)</sup> mln. €
■ Brabant Water	1,132	180	168	160
■ Dunea	616	78	73	129
■ Evides	1,030	165	154	198
■ Oasen	345	41	46	66
■ PWN	787	89	101	171
■ Vitens	2,531	347	331	360
■ Waternet	497	89	68	100
■ WBG	282	44	42	43
■ WMD	202	31	28	29
■ WML	543	71	72	100
<b>The Netherlands</b>	<b>7,964</b>	<b>1,136</b>	<b>1,081</b>	<b>1,356</b>

<sup>1)</sup> Number of connected properties by December 31, 2015

<sup>2)</sup> Of drinking water supplied in own supply area

## Sector development of water sales and price <sup>1)</sup>

	2000	2010	2014	2015
Sales (million m <sup>3</sup> )	1,127	1,090	1,068	1,081
Turnover (million €)	1,418	1,442	1,347	1,356
Average price (€/m <sup>3</sup> ) <sup>2)</sup>	1.43	1.53	1.61	1.61
• Costs water company	1.14	1.16	1.24	1.23
• Groundwater levies and distribution reimbursements	0.12	0.16	0.03	0.03
• Tap Water Tax + VAT	0.17	0.21	0.35	0.35
Real price, 2015=100 (€/m <sup>3</sup> ) <sup>3)</sup>	1.90	1.67	1.62	1.61

<sup>1)</sup> Of drinking water supplied in own supply area

<sup>2)</sup> Over-all price (households + business users)

<sup>3)</sup> Average price adjusted for inflation

## Residential drinking water rate per company <sup>1)</sup>

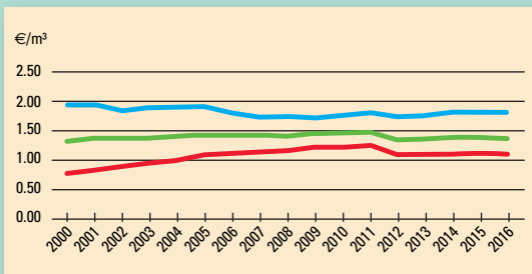
	2015	2016		Difference	
	Total <sup>2)</sup> €/m <sup>3</sup>	Standing charge €/yr	Volumetric rate €/m <sup>3</sup>	Total <sup>2)</sup> €/m <sup>3</sup>	Total 2016 vs. 2015
■ Brabant Water	1.21	70.44	0.46	1.21	– %
■ Dunea	1.71	61.18	1.04	1.69	– 1.2 %
■ Evides	1.55	59.00	0.90	1.53	– 1.4 %
■ Oasen	1.57	71.00	0.72	1.48	– 6.1 %
■ PWN	1.83	58.80	1.21	1.83	– %
■ Vitens	1.16	45.00	0.63	1.11	– 4.3 %
■ Waternet	1.69	42.15	1.24	1.69	– %
■ WBG	1.12	45.96	0.65	1.14	1.0 %
■ WMD	1.19	60.00	0.55	1.19	– %
■ WML	1.64	86.68	0.69	1.61	– 1.8 %
<b>The Netherlands <sup>3)</sup></b>	<b>1.40</b>	<b>57.13</b>	<b>0.77</b>	<b>1.37</b>	<b>– 2.0 %</b>

<sup>1)</sup> Based on the company tariff arrangement for metered houses; excl. distribution reimbursements; excl. Tap Water Tax and VAT

<sup>2)</sup> For an average family (2.17 persons, 43.4 m<sup>3</sup> per person)

<sup>3)</sup> Weighted average according to inhabitants per area; including distribution reimbursements the tariff drops from € 1.43/m<sup>3</sup> to € 1.41/m<sup>3</sup> (–1.4%)

## Development and spread drinking water rate <sup>1)</sup>



■ Supply area with highest rate  
 ■ Supply area with lowest rate  
 ■ Average rate

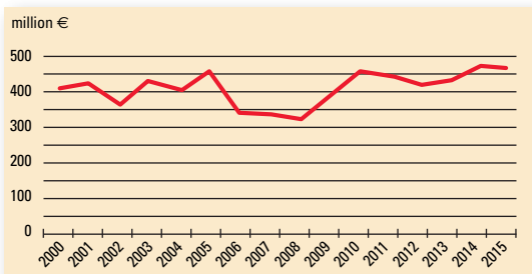
<sup>1)</sup> Households (distribution reimbursements not taken into account)

## WFD area map

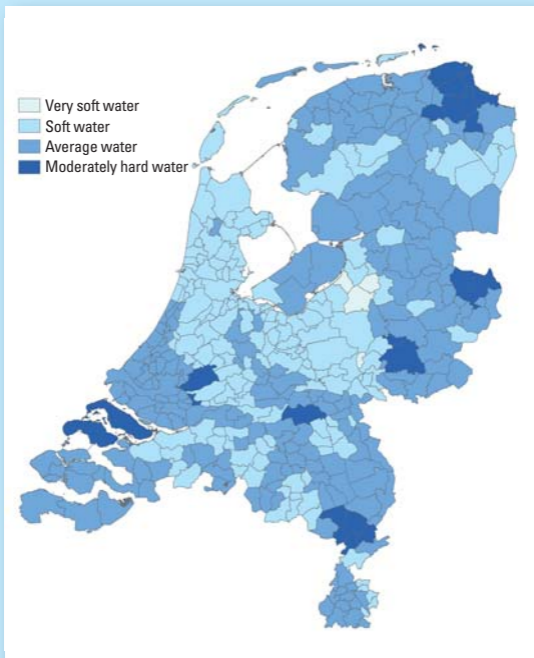
- Groundwater protection areas
- Natura 2000 areas
- River basin districts



## Development of investments



## Hardness of drinking water

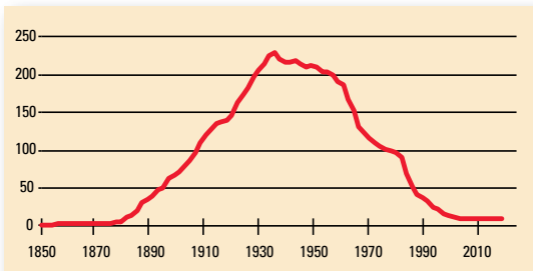


## Financial balance by December 31, 2015

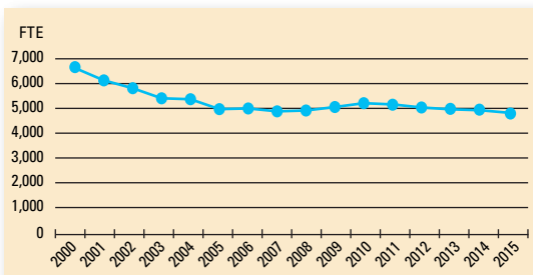
Assets	million €
Tangible fixed assets	5,970
Intangible fixed assets	0
Financial fixed assets	326
Stocks	15
Account receivables / debtors	246
Liquid assets / cash	45
<b>Total</b>	<b>6,602</b>

Liabilities	million €
Share capital	36
Reserves	2,242
Contributions third parties	306
Provisions	180
Long-term loan capital	2,943
Short-term loan capital	896
<b>Total</b>	<b>6,602</b>

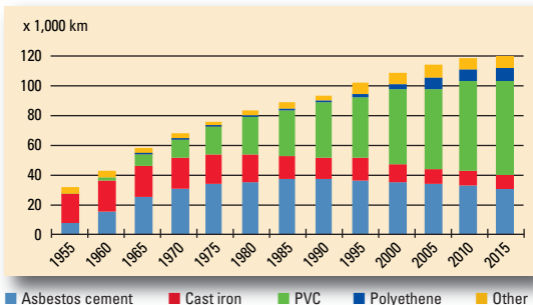
## Development of the number of companies



## Development of the number of employees

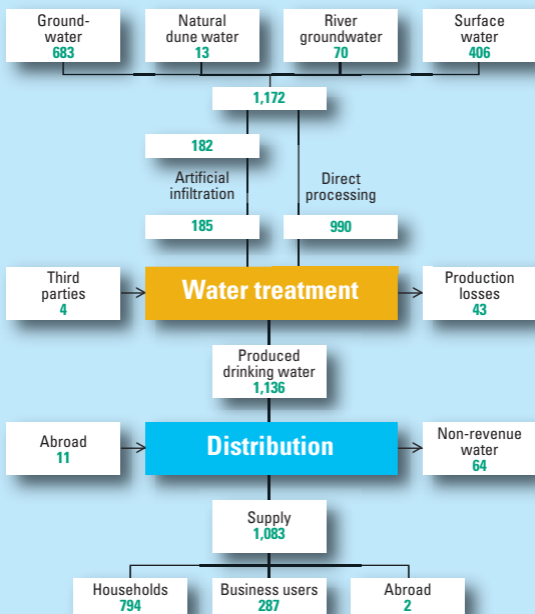


## Development of the drinking water network

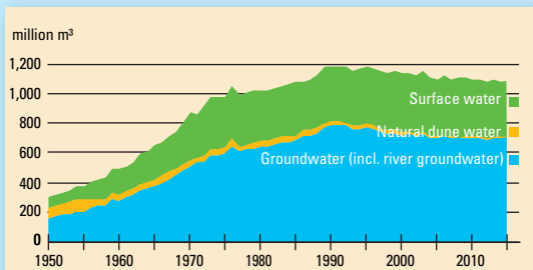




## Drinking water balance 2015, in million m<sup>3</sup>



## Drinking water production by source



## Breakdown of domestic water consumption

Litre / person, per day	1995	2004	2007	2010	2013
Bath	9.0	2.8	2.5	2.8	1.8
Shower	38.3	43.7	49.8	48.6	51.4
Washbasin	4.2	5.1	5.3	5.0	5.2
Toilet flush	42.0	35.8	37.1	33.7	33.8
Washing, by hand	2.1	1.5	1.7	1.1	1.4
Washing, by machine	25.5	18.0	15.5	14.3	14.3
Washing up, by hand	4.9	3.9	3.8	3.1	3.6
Washing up, by machine	0.9	3.0	3.0	3.0	2.0
Food preparation	2.0	1.8	1.7	1.4	1.0
Drinking coffee, tea, water	1.5	1.6	1.8	1.8	1.0
Other	6.7	6.4	5.3	5.3	3.4
<b>Total</b>	<b>137.1</b>	<b>123.8</b>	<b>127.5</b>	<b>120.1</b>	<b>118.9</b>

## Customer satisfaction

	2003	2006	2009	2012	2015
Report mark given by customer					
Service of the water company	7.6	7.6	7.6	7.7	7.9
Drinking water quality	7.7	8.0	8.3	8.4	8.5

Source: TNS Nipo



Association of Dutch water companies

Be Zuidenhoutseweg 12  
P.O. Box 90611  
2509 LP Den Haag

Tel. +31 (0)70 3490 850  
[www.vewin.nl](http://www.vewin.nl)  
[info@vewin.nl](mailto:info@vewin.nl)